

Spring is migration time

See "Our Cover" on page 2




Watt High Lights



**Jackson County Rural Electric
Membership Corporation**

Brownstown, Indiana

Your Touchstone Energy® Cooperative 

March 2009

Volume 63 - Number 9

Watt High Lights

Jackson County Rural Electric
Membership Corporation

274 E. Base Road (Venus Road)
P.O. Box K

Brownstown, IN 47220-0311

Local calls - 812-358-4458

Toll free - 800-288-4458

FAX only - 812-358-5719

E-mail - info@jacksonremc.com

Web site - www.jacksonremc.com

EZ-to-pay online - visit our website

EZ-to-pay by phone - 1-866-850-1766

Office Hours

7:30 AM to 4:30 PM

Monday through Friday

To report outages or emergencies

358-4458 (local) or

toll free 800-288-4458

day or night

Board of Directors

President John Trinkle - district 3

Vice-President Earl Pottschmidt - district 8

Secretary-Treasurer Jerry Kelley - district 5

Larry Peters - district 1

Walter Hunter - district 2

Paul Elliott - district 4

Mark Trisler - district 6

Richard Lambring - district 7

John Miller - district 9

OUR COVER

The sandhill cranes were well into their migration north when this photo was taken in the Honeytown neighborhood north of Brownstown. Perhaps they are signaling that winter is gone and spring has sprung! We can all look forward to milder weather in the coming weeks.

Watt High Lights - (USPS 669-580) is published monthly for \$3.00 per year (electric rates include subscription) by Jackson County Rural Electric Membership Corporation, a consumer owned utility, 274 E. Base Road, Brownstown, Indiana 47220. Periodicals postage paid at Brownstown, Indiana. POSTMASTER: Send address changes to Watt High Lights, P.O. Box K, Brownstown, Indiana 47220.

Energy efficiency investments – the time is right!

*New REMC cash incentives
and federal tax credits are lucrative.*
General Manager Jed Wheatley

The handwriting is on the wall. The new administration and the Congressional leadership have pledged to combat rising levels of carbon dioxide, and they believe that higher electric prices should be part of the solution.

Unfortunately, electricity prices have already increased significantly over the past four years as world demand for energy fuels and for construction resources to have escalated. Many people are understandably struggling with the size of today's bills.

Energy efficiency investments offer two economic payoffs: 1) As always, less electric consumption immediately results in smaller bills. 2) To the extent that electric demand can be curtailed, the construction of expensive new generating plants can be deferred, delaying future rate increases.

The addition of new generation capacity raises retail rates dramatically. Duke Energy estimates that the current construction of its new Indiana coal-fired station will increase

its rates by 18 percent. Of course, if needed generation was not built, demand would out-pace supply and drive retail rates even higher.

What to do? A good option that has now become even better is to improve home weatherization and

Particularly if you heat with an electric furnace or other type of electric resistance heating, you should strongly consider taking advantage of this opportunity.

to install highly efficient heating and cooling equipment. Assistance has become available from two sources.

As shown in this issue of Watt Highlights, a broad array of incentives to install efficient heating and cooling equipment is now available from Jackson County REMC.

In addition, the federal government has recently announced lucrative tax credits to encourage energy efficiency investments. Thirty percent of the cost up to a maximum of \$1,500 is available as a tax credit to install efficient air-to-air electric heat pumps, replacement windows or doors, or added insulation.

For geothermal heat pumps, thirty percent of the installed cost is available as a tax credit in addition to REMC's \$1,000 incentive, and there is no cap. This type of tax credit is also available for solar or small wind energy generation systems.

Particularly if you heat with an electric furnace or other type of electric resistance heating, you should strongly consider taking advantage of this opportunity.

The time is right. Before investing, check out the details at www.energystar.gov under the link for "Tax Credits for Energy Efficiency," or check with your tax advisor.

2009 energy efficiency incentives for Jackson County REMC Members

In an effort to lower the total system demand of electricity for Jackson County REMC and to delay the need of new generating capacity for our wholesale power supplier, Hoosier Energy, we are offering the following energy efficiency incentives for 2009. Incentives apply to equipment installed and operating in the 2009 calendar year in homes or structures connected to Jackson County REMC. Interpretation of qualifying equipment and installations are at the sole discretion of Jackson County REMC. Jackson County REMC reserves the right to modify or discontinue the incentives at any time without notice.

Visit our website: www.jacksonremc.com, or contact our Member Services Department for more information.

2009 Jackson County REMC Incentive Program

Equipment	Conditions	Specs	Rebate
Electric water heater	Must have an Energy Factor of 0.90 or greater	40 gallon	\$25.00
		50 gallon	\$50.00
		80 gallon	\$125.00
Air-to-air heat pump	Installed in a new home; replacing an older air-to-air heat pump; replacing a fossil fuel heating system; back-up system may be electric or fossil fuel (dual fuel)	14 SEER	\$225.00
		15 SEER	\$275.00
		16 SEER	\$325.00
		17 or greater SEER	\$375.00
Air-to-air heat pump replacing existing electric resistance heat	Installed to replace an existing electric heating system such as ceiling cable, baseboards or an electric furnace	14 SEER	\$325.00
		15 SEER	\$375.00
		16 SEER	\$425.00
		17 or greater SEER	\$475.00
Geothermal heat pump	Installed in a new home; replacing any type of heating system other than an existing geothermal system		\$1,000.00
Central air conditioner	Installed in a new home; replacing an old central air conditioner	14 SEER	\$125.00
		15 SEER	\$175.00
		16 SEER	\$225.00
		17 or greater SEER	\$275.00

Visit www.energystar.gov to view a detailed list of qualifying home improvements and HVAC equipment and to find information about how to apply for the related tax credits. As with any tax credits, we advise you to check with your tax consultant or the IRS for eligibility requirements before you make your purchase or home improvements.

Nominating committees to be appointed in April

Nominating committees will be appointed at the April 13 meeting of the board of directors. The nominating committees will be responsible for selecting slates of candidates for the following districts for the election of directors at the 2009 Jackson County REMC Annual Meeting on July 23:

District Two: Includes the REMC's service area in Lawrence and Monroe Counties.

District Five: Includes the REMC's service area in Scott and Jefferson Counties.

District Eight: Includes the REMC's service area in Hamilton and Owen Townships and the part of Brownstown Township lying north of the White River, all in Jackson County.

The nominating committees will be printed in the May issue of "Watt High Lights" and will be posted on the REMC's website (www.jacksonremc.com) as soon as they are available.

Three chosen for 2009 "Youth to Washington" trip

Teens to be part of delegation at national Rural Electric youth gathering

It won't be long before three young people will pack their bags and leave for our nation's capitol as Jackson County REMC's representatives on the 2009 "Youth to Washington" trip.

Adelea Willman, Spencer Roberts and David Wells II will join nearly 1,000 other rural electric cooperative youth from across the country at this year's gathering in Washington, D.C.

Adelea is the daughter of Mark and Yvonne Willman of Seymour and is a junior at Trinity Lutheran High School.

Spencer is the son of Ron and Paula Roberts and is a junior at Brownstown Central High School.

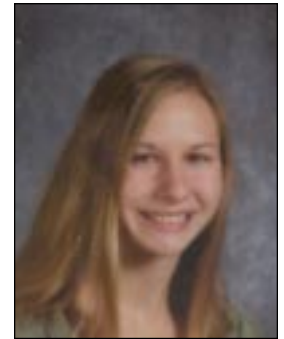
David is the son of David and Shannon Wells and is a junior at West Washington High School.

Selected to serve as alternates were Shawn Martinez, son of Benjamin Martinez and Kristy Vasquez of Austin and a junior at Austin High School; Darren Guetig, son of Robert & Marsha Guetig of Campbellsburg and a junior at West Washington High School; and Max McKinley, son of Wade and Holly McKinley of Campbellsburg and a junior at West Washington High School.

Adelea, Spencer and David were selected as delegates based on their academic achievements, community involvement and 250-word essays.

The trio will gather for a "meet and greet" evening with the other Indiana tour participants in Indianapolis on June 11. From there they will travel to Washington, D.C., where they will tour many of the museums and monuments in our nation's capital, view the changing of the guard at Arlington National Cemetery, visit with members of Congress when delegates "storm the hill," and attend a workshop with officials from the National Rural Electric Cooperative Association. There will also be a stop to visit the Civil War battlefields in Gettysburg, Pennsylvania.

The Indiana "Youth to Washington" trip is sponsored by Indiana's Rural Electric Cooperatives and Indiana State-wide Association of Rural Electric Cooperatives, Inc.



Adelea Willman



Spencer Roberts



David Wells II

REMC tree maintenance program saves money and results in fewer outages

2009 Right-of-way clearing planned for power lines served by substations in Jackson & Lawrence Counties

Ensuring that you have reliable and efficient electric service is one of the goals of the REMC. One way we do this is by maintaining a clear path, or right-of-way easement, around power lines.

When you see maintenance crews trimming or removing trees and shrubs near rights-of-way, remember that they are doing their part to keep your electric service reliable and cost effective.

For conservation stewardship, the REMC strives to maintain power line rights-of-way that provide a natural habitat for wildlife and have as little effect on the landscape as possible. We do this by strategically removing only the branches and undergrowth that directly impact the lines.

Once the trimming is complete, we spray the undergrowth with an environmentally conscious herbicide that is not harmful to humans or animals.

2009 right-of-way clearing areas

The REMC's right-of-way maintenance program for 2009 includes 507 miles of power lines extending from the following three substations in two counties:

Leesville Substation - This includes parts of Carr Township in Jackson County and Guthrie and

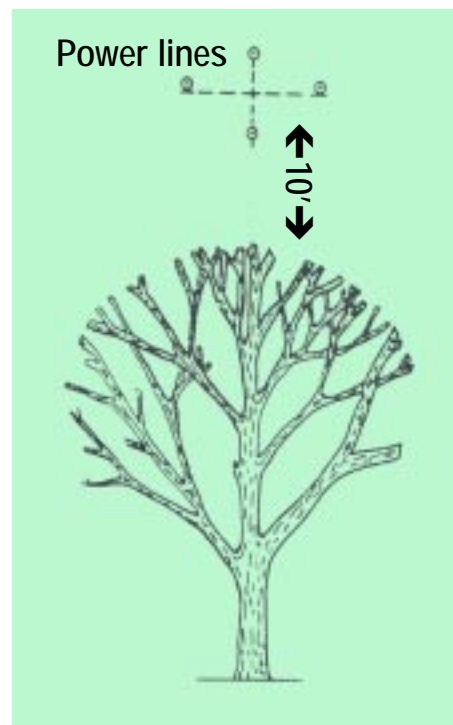
Shawswick Townships in Lawrence County.

Shawswick Substation - This includes parts of Owen and Salt Creek Townships in Jackson County and Pleasant Run Township in Lawrence County.

Pleasant Grove Substation - This includes parts of Brownstown, Hamilton, Owen and Pershing Townships in Jackson County.

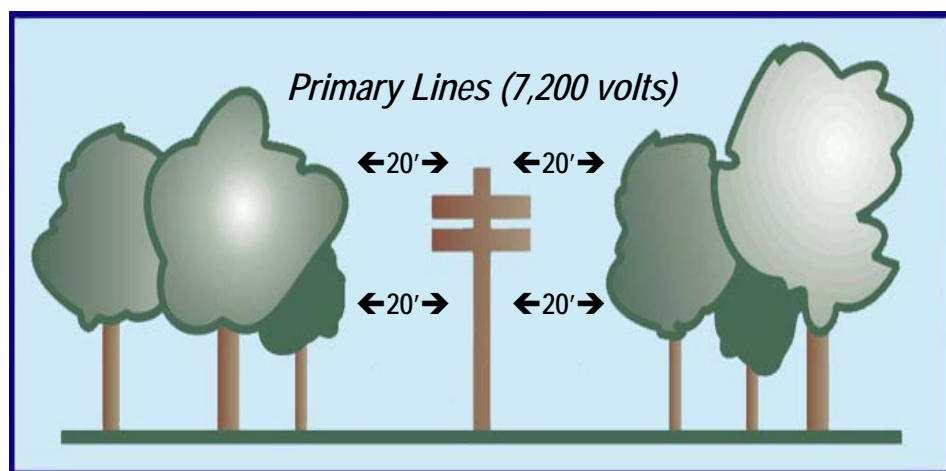
Our maintenance program represents a significant investment, the cost of which we feel contributes toward the reliable electric service that meets your needs. We will endeavor to notify members in the affected areas by mail. Please do not hesitate to contact our Operations Department if you have questions.

Let's work together to prevent costly service interruptions caused by trees damaging power lines.



(Graphic above) There should be a minimum of 10 feet between the top of a shrub or tree and a power line.

(Graphic below) Trees reaching within 20 feet of a 7,200 volt primary line should be removed.



Pay your REMC bill day or night online or by phone!

You can now pay your electric bill any hour of the day or night with our new online and pay-by-phone services.

To pay online, simply visit our website www.jacksonremc.com and click on the "online payment" link.

To pay by phone, call our special toll free number: **1-866-850-1766**.

Payments can be made with a MasterCard or Visa credit or debit card, or through your bank checking account.

Please be sure to wait for your payment authorization number before logging out or hanging up.

Want to learn more about energy? Visit www.jacksonremc.com

REMC's website provides links to energy websites

by Betty Baute, Member Services Assistant

Jackson County REMC's website can be a valuable tool in managing your energy dollars. Not only can you use our website to pay your bill online and to send your meter reading to us, you can also use it's links to access several energy-related websites. Just log onto www.jacksonremc.com and check us out!

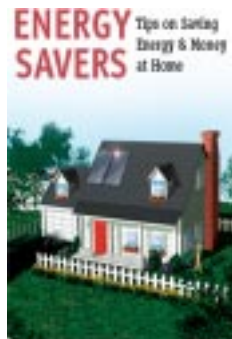
Saving energy



We offer links to several sites that can help you reduce your energy use, and, in turn, save money. These links include:

Apogee Energy Calculator - How does your home measure up? You can use the Apogee Energy Calculator to plug in information about your home and see what your projected energy use should be, and you can make changes in the program to see how much energy you can save.

Touchstone Energy "Energy Saver" - What can you do to reduce your energy costs? Try the do-it-yourself energy audit provided by Touchstone Energy



The popular **US Department of Energy "Energy Saver Guide"** can be downloaded as a PDF file through our link to this DOE website.

HOOSIER ENERGY

Visit the home page of our power supplier. Hoosier Energy also provides additional links to energy related websites.

Education



The REMC website has links to two fun and educational energy

websites. Kids and adults alike can learn about energy efficiency, how to save energy and about safety. Learn more by checking out these links:

Apogee Kids! - Learn energy terms, ways to save energy and how to use energy safely at this website. You can even download energy-related coloring pages to entertain the kids.

Touchstone Energy Kids - Visit this website to learn about safety, saving energy and renewable energy. There are interactive games to play and resource pages for teachers.

ENERGY STAR



One of the best overall websites for energy information is that of the U.S. Department of Energy's ENERGY STAR program. Our link will take you to the ENERGY STAR home page. From there you can find information on energy conservation, energy efficient appliances and tax incentive programs. There is also a great kids' page that adults can also use to learn more about energy.

Dollars & Sense

Lights on or lights off?



The Energy Efficiency & Renewable Energy division of the U.S. Department of Energy tells us whether it's better to leave a light on or turn it off when leaving the room

The cost effectiveness of when to turn off lights depends on the type of lights and the price of electricity. The type of light is important for several reasons. All types of lights have a nominal or rated operating life, which is the total number of hours that they will provide a specified level or amount of light.

However, the operating life of all types of light bulbs is affected by how many times they are turned on and off. The more often they are switched on and off, the lower their operating life.

Incandescent Lighting

Incandescent lights (or bulbs) should be turned off whenever they are not needed. Nearly all types of incandescent light bulbs are fairly inexpensive to produce and are relatively inefficient. Only about 10%–15% of the electricity that incandescent lights consume results in light; the rest is turned into heat. Turning the light(s) off will keep a room cooler, an extra benefit in the summer. Therefore, the value of the energy saved by not having the incandescent lights on will be far greater than the cost of having to replace the bulb.

Fluorescent Lighting

The cost effectiveness of turning

fluorescent lights off to conserve energy is a bit more complicated.

A general rule-of-thumb for when to turn off a fluorescent light is if you leave a room for more than 15 minutes, it is probably more cost effective to turn the light off. Or in other words, if you leave the room for only up to 15 minutes, it will generally be more cost effective to leave the light(s) on.

Fluorescent lights are more expensive to buy, and their operating life is more affected by the number of times they are switched on and off, relative to incandescent lights. Therefore, it is a cost trade-off between saving energy and money by turning a light off "frequently" and having to replace the bulbs "more" frequently. This is because the reduction in usable lamp life due to frequent on/off switching will probably be greater than the benefit of extending the useful life of the bulb from reduced use.

By frequent we mean turning the light off and on many times during the day.

In general, the more energy-efficient a bulb is, the longer you can keep a light on before it is cost effective to turn it off.

When you're planning to dig, do your part. Call



two full working days before you start!

Contact the Indiana Utility Plant Protection Service (also known as Holey Moley) to have any possible underground utilities located before you begin to dig. **In Indiana, it's the law!**

Be ready to provide the following information:

- County
- Township
- Road address
- Type of planned work
 - Extent of work
 - Name of caller
 - Telephone number
 - Best time to call
- Project start date & time
- Contractor's name & address

IUPPS is a free statewide utility notification service that has been providing Hoosiers and their utilities a cost effective means of locating underground utility lines for more than 20 years.

Next Issue . . .

Getting ready for camping

Whether you pack up the family and head for one of our area state parks or you just put up a tent in the backyard, our April issue will include recipes to feed your hungry crowd. We'll also include some tips to make packing for your camping trip a breeze.

Send recipes, topic ideas, cooking questions & suggestions to:

Watt High Lights

Jackson County REMC

PO Box K

Brownstown IN 47220-0311

fax: 812-358-5719

e-mail: bbaute@jacksonremc.com

Did you know?

- The banana is botanically classified as a berry. It is a distant cousin to the spices ginger, turmeric, and cardamom.
- The fruit *fingers* grow in clumps known as *hands*, since they resemble a hand with fingers. The entire stalk, known as a *bunch*, takes up to a year for the fruit to ripen enough to be harvested.
- Some banana trees continue producing up to one hundred years, although most banana plantations renew their stock every ten to twenty-five years.
- There are more than four hundred varieties of bananas, with the yellow Cavendish being the most favored in America.

Going bananas!

by Betty Baute, Member Services Assistant

There is a lot to be learned about bananas. Did you know that, the bright yellow "sweet" banana is actually a mutant strain of the red and green cooking bananas that are usually called plantains?

Did you also know that the banana isn't actually a fruit grown on a tree? It's classified as a "berry" produced by the flower of an herb plant.



This month's recipes feature the banana we all know and love -- the yellow sweet banana. Enjoy!

"Banana Deluxe" ice cream

6 egg yolks	2 large ripe bananas, mashed
2 cups milk	1/2 teaspoon grated nutmeg
2 cups whipping cream	1 teaspoon vanilla
1/2 cup plus 2 tablespoons sugar	1/2 teaspoon salt

Combine milk, cream, sugar and nutmeg in a saucepan over medium heat. Stir constantly until sugar is dissolved and small bubbles form along sides of pan. Stir in bananas. Beat egg yolks until well-blended; temper eggs by adding a little of the hot mixture; repeat with a little more hot mixture. Add eggs to hot mixture, whisking constantly. Cook over medium heat until mixture coats the back of a metal spoon (3 to 5 minutes). Remove from heat and set pan in an ice bath. Remove from ice bath when cool and chill well to allow flavors to blend. Freeze in an ice cream maker according to manufacturer's directions. Yield - 6 servings

Frozen chocolate bananas

8 bananas, peeled	8 popsicle sticks
32 ounces semi-sweet chocolate chips	Crushed peanuts, flaked
4 tablespoons unsalted butter	coconut or colored sprinkles

Line a cookie sheet with waxed paper. Cut off one end of each banana and insert a popsicle stick into the end, pushing stick halfway into banana. Place bananas on cookie sheet and freeze for an hour. Melt chocolate and butter in the top of a double boiler over simmering water until melted. Dip bananas, one at a time, into chocolate, turning to coat completely. Roll each banana in nuts, coconut or sprinkles. Place bananas on cookie sheet and return to freezer until chocolate hardens. Eat immediately or store in freezer bags. Yield - 8 servings

Banana cake with cinnamon glaze

1-1/2 cups flour	1 cup sugar
1 teaspoon ground cinnamon	1/2 cup vegetable oil
1/8 teaspoon ground nutmeg	2 eggs
1 teaspoon baking soda	1 cup mashed ripe bananas
1/2 cup chopped nuts	1/2 cup sour cream
1/2 teaspoon salt	1 teaspoon vanilla extract

Combine first 6 ingredients in a small bowl; set aside. In a large bowl, beat sugar and oil; add eggs, bananas, sour cream and vanilla, beating until combined. Add dry ingredients, stirring only until ingredients are combined. Pour into a 9 X 13 pan coated with non-stick spray. Bake at 350 degrees for 30 to 35 minutes. Cool completely before glazing. GLAZE: Whisk together 1 cup powdered sugar and 1 teaspoon ground cinnamon; stir in 1/2 teaspoon vanilla extract and just enough milk to make a spreadable glaze. Yield: 24 servings

Classic banana pudding

1 can (14 ounces) sweetened condensed milk	2 cups heavy whipping cream
1-1/2 cups cold water	40 vanilla wafer cookies
1 package (4-serving size) French vanilla pudding mix	3 to 4 medium bananas, sliced and dipped in lemon juice
	vanilla wafer crumbs for garnish

Combine milk and water in large mixing bowl. Add pudding mix and beat 3 minutes on medium; refrigerate for 15 minutes. Meanwhile, whip cream to stiff peaks. Fold whipped cream into chilled pudding. Spread 1/2 cup of pudding into serving bowl and top with one-third of the vanilla wafers, followed by one-third of the bananas and one-third of the remaining pudding. Continue layers, finishing with pudding on top. Sprinkle with crushed vanilla wafer crumbs. Chill at least 4 hours before serving. Refrigerate leftovers. Yield: 8 to 10 servings



Energy Efficiency

Tip of the Month

Check your water heater thermostat. Many manufacturers set thermostats to 140° F, although most households only need a setting of 120° F. Each 10 degree drop in water temperature can save you between 3 percent and 5 percent in energy costs.

Source: U.S. Department of Energy

Banana tips & hints

- 1 pound of bananas = 3 medium or 4 small
- 1 pound bananas = 2 to 2-1/2 cups sliced or 1-1/3 cups mashed
- 1 pound dried bananas = 4-1/2 cups slices
- 1 medium banana = 2/3 cup sliced or 1/2 cup diced
- 3 medium bananas = 1 cup mashed
- Bananas can be refrigerated for several days to delay ripening. Although the skins of refrigerated bananas will turn brown, the fruit itself will be fine. To enjoy full flavor, allow refrigerated bananas to come to room temperature before eating.
- Peeled bananas should be eaten immediately as they discolor due to exposure to the air. Bananas can be frozen whole, but don't expect the same texture when thawed. Freeze them in their skin and save for later use in sauces, baked goods or blended drinks.
- Add one tablespoon of citrus or pineapple juice to one cup of mashed bananas and freeze in a sealed container up to three months.
- Bananas are an excellent source of potassium with over 450 mg per serving. They are also rich in magnesium.

Stop this energy invader!

*Ginghis the Con could save energy
with hot water conservation*

by Betty Baute, Member Services Assistant

When the lights go out . . .

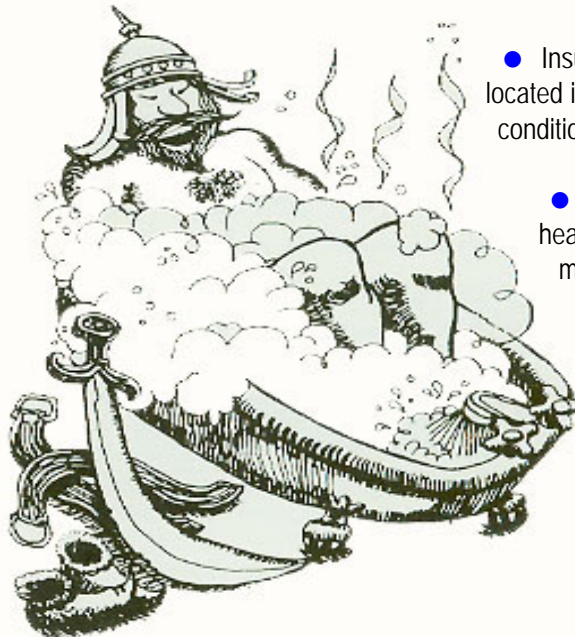
*Here's what you should
do if your power goes off:*

- Check your service panel to make sure you haven't tripped a breaker or blown a fuse.
- Check with or call a couple of your neighbors to see if they are out of power too.
- **Call the REMC at 358-4458 or 800-288-4458** to report the outage. (Be patient - other folks may also be trying to call.)
- Disconnect sensitive equipment such as VCR's, TV's, computers, microwave ovens and your central air conditioner or heat pump. This will help prevent any damage by a power surge when the electricity comes back on.
- Turn on a single light so you'll know when your power has been restored.
- Turn on a porch light so the REMC crew will know the power is back on.
- When the power is restored, gradually reconnect your appliances and equipment to avoid overloading circuits.
- Have any appliances or equipment damaged during a storm checked by an electrician or technician before using them again.

Editor's note: In the early 1980's the State of Indiana began a campaign to help utilities inform their consumers about saving energy. The packet included a number of fictional "energy invaders" who wasted energy and, in turn, wasted money. With today's renewed focus on energy and money, we felt we should bring the "energy invaders" back to life. This month we introduce you to "Ginghis the Con."

Ginghis thinks hot water is a steal. He turns up his hot water heater and lets the faucet run and run and run. "Ah! Free hot water," he thinks. Ginghis takes a long hot shower in the morning and soaks in a hot bath before he goes to bed. And, at night you can hear the continual drip of hot water --- more valuable energy going down the drain!

Ginghis may be "stealing" hot water now, but wait until next month's energy bill comes.



If Ginghis would just turn his hot water thermostat back to 120 degrees, take shorter showers, and fix those leaky faucets, he could still have all the hot water he needs --- and at a price he can afford.

Remember, you can trim your energy bill just by plugging up your hot water waste. Here's how:

- Take brief showers instead of baths. Don't turn on the shower until just before you're ready to get in.
- Repair leaky faucets. By spending a few cents for a little washer you can save several dollars in energy.
- Install a flow restrictor at your shower head. It restricts the flow of water and restricts your energy expense.
- When leaving for the weekend, or when going on vacation, turn your water heater completely off. It's wasteful to heat water that no one will be using.
- Insulate your water heater if it is located in an unheated or in an air-conditioned area in your home.
- When buying a new water heater look for a high efficiency model bearing the ENERGY STAR label.
- A new heater may also qualify for a rebate from the REMC if you make sure the new unit has an energy factor of .90 or greater.

Community Calendar

To have your non-profit group's event listed in our "Community Calendar," please contact us by letter, phone or e-mail (bbaute@jacksonremc.com) at least six weeks before your event date. Include a phone number we can call to verify your information.

Jackson County

March 27 - T-shirt contest deadline for children to enter designs for the 2009 Kids Fest t-shirt. For more information contact Janice at Child Care Network, Inc. (812-523-1825).

April 18 - Paper drive to benefit the Jonathan Brewer Memorial Scholarship Fund. Newspapers, magazines, cardboard and mixed paper accepted from 8:00 a.m. to 2:00 p.m. at the Brownstown Dairy Queen parking lot. For more information contact Steve and Tina Brewer (812-358-5822).

April 25 - Annual Kids Fest from 10:00 a.m. to 2:00 p.m. at the Seymour High School gymnasium. Information for parents from more than 40 booth vendors; many free activities for children; car seat fitting station; bicycle rodeo; tricycle event. The event is sponsored by the Seymour Noon Lions Club. For more information contact Janice at Child Care Network, Inc. (812-523-1825).

Jennings County

March 17 - Soup Cafe from 5:30 to 7:30 p.m. Free hot meal for those in need. Operated by Christway Christian Church (just north of Jay-C Food Store on State Road 3 in North Vernon). For more information contact Rev. Dan Denny (812-592-2060).

March 31 - Composting & Vermiculture

The REMC will be open for regular business hours of 7:30 a.m. to 4:30 p.m. on Good Friday, April 10.

Class- This free class will be held at 7:00 p.m. at the Jennings County Extension Office, in the Jennings County Government Building, 200 E Brown, in Vernon.

April 2 - First session of the 2009 Landscaping Class - Classes will run for four consecutive weeks. Take one class or take them all. These free classes will be held at 7:00 p.m. at the Jennings County Extension Office, in the Jennings County Government Building, 200 E Brown, in Vernon.

April 10 - Annual Good Friday fish fry sponsored by the Spencer Township Volunteer Fire Department at the firehouse in Hayden. Fish, fries, slaw and drink served from 4:00 to 7:00 p.m. Carry-out available. For more information contact Steve Wheeler (812-346-4774).

April 25 - Four Corners Craft and Garden Show - 9:00 a.m. to 2:00 p.m. at St. Joseph's Catholic Church Parish Hall, south of US 50 at Hayden. "From Our Garden to Yours" plant sale, variety of perennials, annuals and vegetable plants, hanging baskets, crafts, garden art, home décor, baked goods, lunch of sandwiches and salads available. For more information call 812-346-8685.

April 25 & 26, 2009 - Sassafras Tea Festival & Civil War Living History - sponsored by the Jennings County Historical Society. Civil War history, mock battles, Blue & Grey Ball, bake sale at the society's museum in Vernon. For more information call 812-346-8989.

Scott County

March 16 - Scott County Historical Society Dinner with featured guest Bill Comer speaking on *Farm Days*. Event begins at 6:00 p.m.; cost is \$6.00 per person. For more information call the museum at 812-752-1050.

March 18 - Brown Bag Lunch program at 12:00 noon at the Scott County Heritage Center & Museum. Featured will be *The 2009 Inauguration* presented by John Scheckler. Bring your own lunch. Desserts and drinks will be furnished. For more information call the museum at 812-752-1050.

March 26 - Spring Luncheon at the Scott County Heritage Center & Museum with Dawne Gee as featured speaker. Cost is \$12.00 per person; call ahead for reservations as seating is limited. For more information call the museum at 812-752-1050.

April 15 - Brown Bag Lunch program at 12:00 noon at the Scott County Heritage Center & Museum. Featured will be *I'm Too Blessed to Be Stressed* presented by Nancy Nay. Bring your own lunch. Desserts and drinks will be furnished. For more information call the museum at 812-752-1050.

April 18 - Antiques Appraisals from 1:00 to 4:00 p.m. by Lyman Goben and Rob Cathcart at the Scott County Heritage Center & Museum. Cost is \$5.00 per item. For more information call the museum at 812-752-1050.

Washington County

April 17 & 18 - 9th Annual Spring Home & Garden Show sponsored by Leader Publishing Company. More than 90 vendors will be set up at the Washington County Fairgrounds. Free admission; door prizes and grand prizes. Hours are 5:00 p.m. to 8:30 p.m. on Friday, April 17 and 9:00 a.m. to 2:30 p.m. on Saturday, April 18. The Salem Lions Club will hold a fish fry on Friday night and Westview Christian Church will provide breakfast and lunch on Saturday. For more information call Leader Publishing at 812-883-3281.

When calling or writing please give the name and account number shown on your label or billcard.

Clip and bring this coupon to the REMC office to receive your free compact fluorescent light bulbs. We recommend calling if you are making a special trip to be sure we have plenty of bulbs in stock.
Limit of 6 CFLs per member, please.

TELEPHONE (812) 358-4458
TOLL FREE (800) 288-4458

During regular office hours you will be connected with our switchboard operator. After regular hours you will be connected with our answering service. Please call during regular office hours for all business other than outages or emergencies.

OFFICE HOURS

7:30 AM to 4:30 PM - Monday through Friday

FAX - (812) 358-5719

E-mail - info@jacksonremc.com

website - www.jacksonremc.com



15-watt



20-watt



23-watt

Free Compact Fluorescent Light Bulbs From Jackson County REMC

(Clip coupon above - Limit of 6 bulbs per member)

Dear REMC Member,

Jackson REMC, in partnership with its wholesale power supplier, Hoosier Energy, is giving REMC members free compact fluorescent (CFL) bulbs to use in their homes.

If you have never tried CFL bulbs we hope you will take this opportunity to replace some of your most used incandescent bulbs. If you already are using CFL bulbs please add these to your inventory.

The free CFL bulbs are part of Hoosier Energy's 2009 energy efficiency program aimed at reducing electricity demand and delaying the need for new base load power plants.

*According to U.S. Government figures, replacing one incandescent light bulb with an Energy Star®-qualified CFL bulb in every American home would conserve enough energy to light more than 3 million homes for a year**

For more details on energy efficient CFL bulbs—including simple instructions for safe disposal—visit www.energystar.gov.

For more information about our 2009 Energy Efficiency Incentive Programs for water heaters, air conditioners, air-to-air heat pumps and geothermal heat pumps—visit www.jacksonremc.com.

**U.S. Department of Energy "Compact Fluorescent Light Bulbs" www.energystar.gov*