

# Spring Sunrise


Spring is the time to ready your  
heat pump or air conditioner for summer  
See page 11 for more information

## Watt High Lights



**Jackson County Rural Electric  
Membership Corporation**

Brownstown, Indiana

Your Touchstone Energy® Cooperative 

**April 2009**

Volume 63 - Number 10

## Watt High Lights

Jackson County Rural Electric  
Membership Corporation

274 E. Base Road (Venus Road)  
P.O. Box K

Brownstown, IN 47220-0311

Local calls - 812-358-4458

Toll free - 800-288-4458

FAX only - 812-358-5719

E-mail - [info@jacksonremc.com](mailto:info@jacksonremc.com)

Web site - [www.jacksonremc.com](http://www.jacksonremc.com)

EZ-to-pay online - visit our website

EZ-to-pay by phone - 1-866-850-1766

### Office Hours

7:30 AM to 4:30 PM

Monday through Friday

### To report outages

### or emergencies

358-4458 (local) or

toll free 1-800-288-4458

day or night

### Board of Directors

President John Trinkle - district 3

Vice-President Earl Potts Schmidt - district 8

Secretary-Treasurer Jerry Kelley - district 5

Larry Peters - district 1

Walter Hunter - district 2

Paul Elliott - district 4

Mark Trisler - district 6

Richard Lambring - district 7

John Miller - district 9

### OUR COVER

Spring has sprung! The weather has gotten milder and our need for our heating systems has fallen. However, we need to be ready for the heat of summer. See page 11 for information on getting your heat pump or central air conditioner ready for the upcoming cooling season.

**Watt High Lights** - (USPS 669-580) is published monthly for \$3.00 per year (electric rates include subscription) by Jackson County Rural Electric Membership Corporation, a consumer owned utility, 274 E. Base Road, Brownstown, Indiana 47220. Periodicals postage paid at Brownstown, Indiana. POSTMASTER: Send address changes to Watt High Lights, P.O. Box K, Brownstown, Indiana 47220.

# Just the facts - about small scale solar and wind

**General Manager Jed Wheatley**

The idea of powering appliances with free sunshine or free wind has much appeal, especially with energy costs spiraling upward. Now the economic stimulus bill is even offering to reimburse 30 percent of the cost of a homeowner's solar or wind installation via tax credits.

In order to evaluate the payback on such an investment, some hard numbers are needed, numbers that show what one might expect if he installed a small scale system, not in California or Arizona or Iowa, but right here in Southern Indiana. Sales hype is fairly easy to come by. Hard facts are scarce – until now.

To help provide this critical data, Jackson County REMC's power supplier, Hoosier Energy, has invested in four solar panel and two wind turbine installations and is willing to share its experiences.

Hopefully, such information will help answer such questions as: What size system to install? What brand equipment? How much would it cost? How much electricity would it produce?

Such helpful information is now available at the Hoosier Energy web site: [www.hepn.com](http://www.hepn.com). Just click on the "Renewables" link to gain access to a wealth of real-world facts and figures.

For example, you can check on the solar installation in Decatur County and find that a three kilowatt array of Sanyo photovoltaic panels has been installed at a total cost of \$36,000. During March 2009, an average of ten kilowatt hours per day was generated. At nine cents per kilowatt hour, assuming this generation occurred at the time a home needed power, the electric bill for the month would have been reduced by about \$30.00, including tax, best case.

To be sure, there are other issues to consider. A positive consideration would be the backup power that an installation may provide if a storm would bring down utility lines. There would also be ongoing costs to factor in, such as equipment maintenance and property damage and liability insurance.

Generally speaking, we advise that there are likely lower cost investments that will create more value than small scale wind or solar in this part of the country. These well-proven options would include home weatherization upgrades and investments in high-efficiency HVAC equipment such as geothermal heat pumps, for which there is also a 30 percent tax credit plus a \$1,000 incentive from the REMC.

As you determine how best to cope with rising energy costs, we are available to help answer your questions and give you the facts.

# Nomination process set to begin for election of directors at 2009 Annual Meeting

*Districts Two, Five and Eight involved in this year's election*

Jackson County REMC members will elect three directors to three-year terms at the 2009 Annual Meeting on July 23. The meeting will be held at the Jackson County Fairgrounds located on State Road 250 just southeast of Brownstown.

Registration will begin at 5:30 p.m. (EDT) and the business session, which includes the election of directors, will be called to order at 7:30 p.m. (EDT). Nominees will be introduced in the upcoming "Annual Report" issue of "Watt High Lights."

Nominating committees were appointed at the April 13 meeting of the REMC's board of directors. The names were not available before our publication deadline, however the committees have been posted on our website ([www.jacksonremc.com](http://www.jacksonremc.com)).

## Qualifications for directors of Jackson County REMC

The Bylaws of Jackson County REMC establish requirements for those members nominated for service on the board of directors. These requirements include:

- A director candidate must be a member of Jackson County REMC.
- The primary residence of a director candidate must be in the district he or she is to represent.
- A director candidate must receive electricity from Jackson County REMC at his or her primary residence.
- A director candidate must not be a close relative (spouse, child, grandchild,

great-grandchild, parent, grandparent, great-grandparent, brother, sister, aunt, uncle, nephew or niece by blood or by law) of an incumbent director or of an employee of the REMC.

- A director candidate must not have been an employee of the Rural Electric within the last five years.
- A director candidate must not be employed by or have a financial interest in a competing enterprise.

## Districts Two, Five & Eight in this year's election

The following are the districts set for election of directors at the 2009 REMC Annual Meeting on July 23:

**District Two:** Includes the REMC's service area in Lawrence and Monroe Counties.

**District Five:** Includes the REMC's service area in Scott and Jefferson Counties.

**District Eight:** Includes the REMC's service area in Hamilton and Owen Townships and the part of Brownstown Township lying north of the White River, all in Jackson County.

\* \* \* \* \*

Questions about the nomination or election process should be directed to REMC General Manager Jed Wheatley.

The REMC's member handbook can be viewed on the REMC's website ([www.jacksonremc.com](http://www.jacksonremc.com)). Copies of the handbook are available on request.

## Can tabs to be collected at the Annual Meeting

We will again be collecting aluminum can tabs for the Ronald McDonald House of Indianapolis at this year's annual meeting.

In recent years REMC members have collected nearly one ton of can tabs to benefit the place that serves as a home-away-from-home for families with children hospitalized in the Indianapolis area.

Overall, more than 1 billion tabs have been donated by Indiana groups in the 15 years since the program began, generating nearly \$500,000. These funds are applied to the operating expenses of the Ronald McDonald House of Indiana. The funds from can tabs underwrite the approximate cost of operating 3 rooms for an entire year.

Bring your can tabs to the annual meeting and we'll send them on to the Ronald McDonald House.

For more information about the can tab program, visit [www.rhm-indiana.org/poptabs](http://www.rhm-indiana.org/poptabs).

## Pay your REMC bill day or night online or by phone!

You can now pay your electric bill any hour of the day or night with our new online and pay-by-phone services.

To pay online, simply visit our website [www.jacksonremc.com](http://www.jacksonremc.com) and click on the "online payment" link.

To pay by phone, call our special toll free number:  
**1-866-850-1766.**

Payments can be made with a MasterCard or Visa credit or debit card, or through your bank checking account.

**Please be sure to wait for your payment authorization number before logging out or hanging up.**



## North Vernon 6th grader chosen to attend 2009 Touchstone Energy Camp

Jordan Bullard will be joining more than 100 other sixth grade students for a fantastic camp experience when she attends the 2009 Touchstone Energy Camp June 3 to 6.

The daughter of Joyce and James Gilland, Jordan is a student at Sand Creek Elementary School in Jennings County.

While at Touchstone Energy Camp, Jordan will learn about electrification and

electric safety. The camp also teaches the youngsters about cooperative business principles. She'll also be able to participate in regular camping activities such as horseback riding, swimming and boating.

Jordan wrote a short essay as part of her application, and we're happy to share her thoughts with you below.

Congratulations, Jordan! Have a wonderful learning experience!

## Why do you want to go to Touchstone Energy Camp?

I would love to go to Touchstone Energy Camp because it sounds very fun and interesting. I think it would be a great experience for me, since I have never before gone to a camp. I know I would learn a lot by going to Touchstone Energy Camp because I know very little about electrical stuff. This camp would help me have fun and learn all at the same time.

*- Jordan Bullard*



Is it hot, or is it not? Always think **HOT!**  
**Power lines can be KILLERS**

*For safety's sake, treat all low-hanging and fallen wires as if they are energized electric lines.*

*By Betty Baute, Member Services Assistant*

Automobile accidents and severe weather are the two major causes of downed and low-hanging power lines. With winter storms in our recent past and spring storms now upon us, we thought now would be a good time to remind you that downed and low-hanging wires can be **DEADLY**.

Always assume that a downed or low-hanging wire is an energized --- or "**hot**" --- electric wire. It may look like something as simple as a fallen phone cable, but why take the chance that the wire could be in contact with a "**hot**" power line still on the pole? Just ask yourself this question: "*Is it hot, or is it not?*" And, always answer with "**HOT!**"

Here are some additional tips to help keep you and your family safe in the event you come across a fallen or low-hanging wire:

- Report any fallen or low-hanging wires immediately to the REMC or the responsible utility, and to local 911 authorities.

- Stay away from the wires and anything that may be

touching them. Keep others away from them too.

- Do not touch someone who is in contact with the fallen or low-hanging wire. If you do, you could become the next victim.

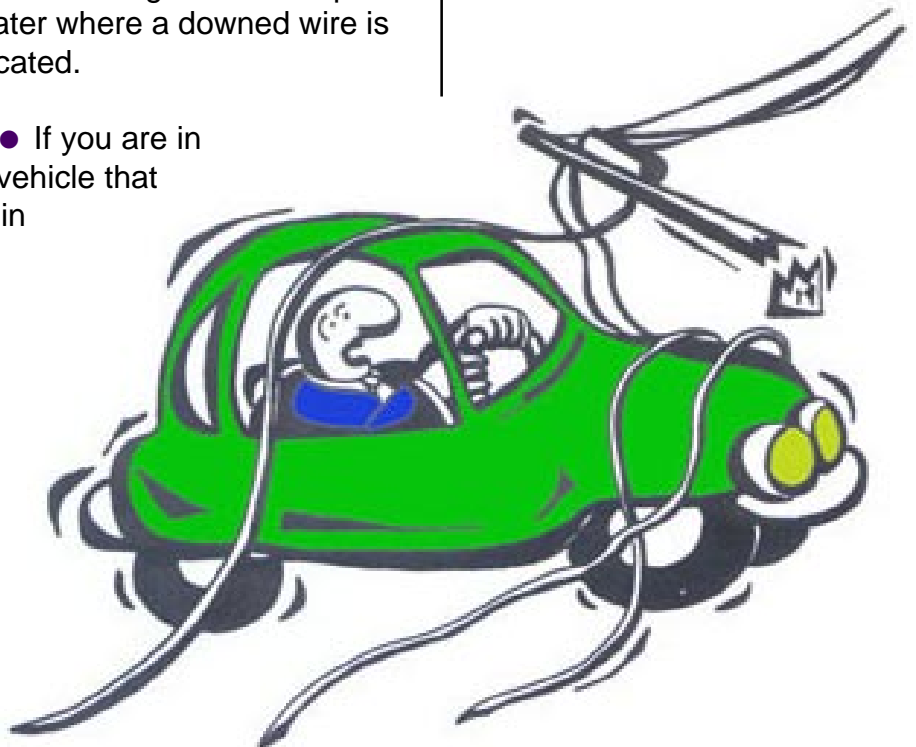
- Do not try to move a fallen wire or anything in contact with it by using a pole, broom, stick or any other object. Even materials that don't normally conduct electricity will do so if even slightly wet.

- Be careful that you do not walk on wet ground or step into water where a downed wire is located.

- If you are in a vehicle that is in

contact with a wire, stay inside until an REMC employee tells you the wire is dead and it is okay to leave the vehicle. If you must leave the vehicle in the event of a fire, you must use a "kangaroo" type leap, with your feet together, so you do not have one foot in the vehicle and one foot on the ground at the same time.

- Never drive over or under fallen wires or low-hanging wires.



# *Right-of-way spraying program to begin in May*

*Sections of Brown, Jackson and Jennings Counties included in 2009 schedule*

Jackson County REMC's tree and brush maintenance program represents a significant investment, the cost of which we feel provides you with the reliable electric service that meets your needs. This year's right-of-way herbicide spraying program will begin in early May. Approximately 570 miles of right-of-way have been scheduled for this year's program.

The REMC will again be using its own equipment and employees to perform the spraying, which has

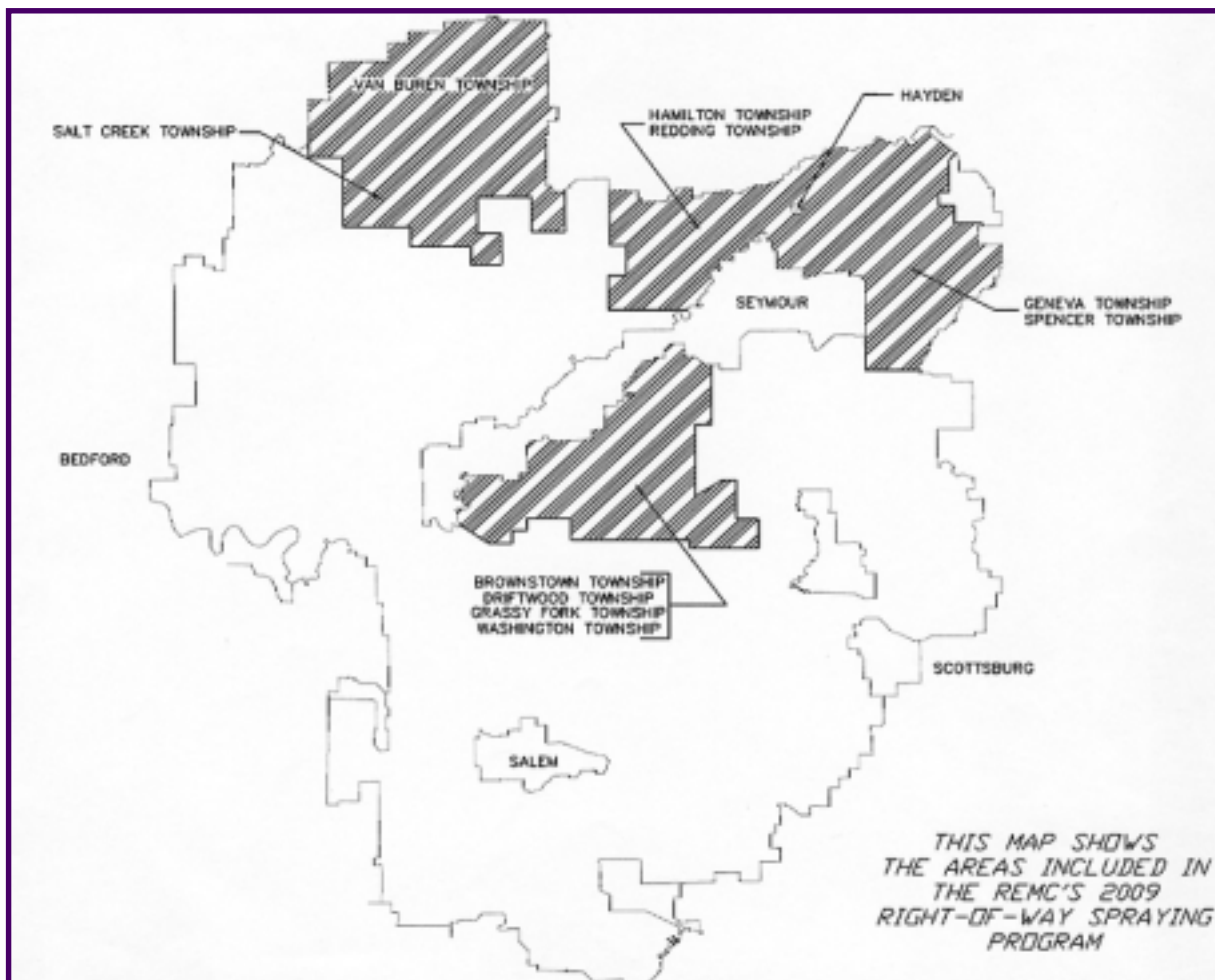
proven to be quite effective. Selective herbicides remove only unwanted weeds, brush and trees from rights-of-way. Ongoing research results show that spraying programs like the REMC's enhance wildlife habitat by promoting grasses, low-growing shrubs and other ground cover that birds, deer and small animals prefer.

This year's treatment area will include portions of the REMC distribution lines in Brownstown, Driftwood, Grassy Fork, Hamilton, Redding, Salt

Creek and Washington Townships in Jackson County; Van Buren Township in Brown County; and Marion, Spencer and Geneva Townships in Jennings County (including the Country Squire Lakes complex).

Customers will be notified in advance of work starting in their areas.

Questions concerning the spraying program are welcomed. Just call us at 358-4458 or 1-800-288-4458



Let's talk about it

# Energy efficiency and the stimulus bill

*Here is some information on how the 2009 American Recovery and Reinvestment Act may help you make your home more energy efficient*



It's all over the news; with the passage of the federal stimulus bill there's money available to help many Americans weatherize homes and make energy efficiency improvements. Jackson County REMC is ready to help as the American Recovery and Reinvestment Act of 2009 goes into effect.

The state of our economy has left many of our members searching for ways to make ends meet. Making the most of each energy dollar is high on everyone's list of concerns. We're ready to help explain which parts of the stimulus bill may affect you, especially if you're considering energy efficiency improvements.

## Weatherization Assistance Program

Investing in a few basic measures to secure a home from outside elements could provide major benefits. The U.S. Department of Energy (DOE) says weatherization—the process of sealing air leaks and properly insulating a home—can reduce heating bills by up to 32 percent, resulting in an average energy savings of \$358 per year.

As a result of the stimulus package, DOE's Weatherization Assistance

Program is expanding with a goal of weatherizing one million homes per year. In the past, only households that earned up to 150 percent of the national poverty level were eligible to participate. The stimulus bill extends eligibility to those with incomes below 200 percent of the national poverty level. For a family of four, that's an income limit of \$44,100.

Program participants receive a professional energy consultation with an analysis of energy bills, a blower-door test to locate air leaks and advice on how to be more efficient. Workers then arrive to make energy upgrades like insulating walls and roofs, sealing air leaks, and installing more efficient heating and cooling systems. The process to weatherize a home through the program usually takes two days with an average cost of \$2,500. Since some homes have different needs, the stimulus bill allows up to \$6,500 to be spent on each home.

**In Indiana eligible members should contact their county's Community Action Agency (CAP) to apply for the weatherization services.**

## Tax credits available for energy improvements

For members not eligible for feder-

ally funded programs, the stimulus plan provides a homeowner energy efficiency tax credits equal to 30 percent of the cost for new energy upgrades, including weatherization activities as well as installation of efficient heating, ventilation, and air conditioning systems. The maximum credit is \$1,500, except for geothermal systems. Efficiency tax credits were already available for 2008, but carried a \$500 limit (with additional caps for certain types of upgrades) and only covered up to 10 percent of a member's investment.

Tax credits directly lower a member's federal income taxes, and are generally more valuable than tax deductions because they reduce taxes owed dollar-for-dollar. In contrast, a tax deduction, like a home mortgage or charitable gift, lowers taxable income and may only offer small savings. For example, a \$1,500 tax deduction for someone in the 25 percent tax bracket would lower taxes owed by \$350; a \$1,500 tax credit for energy efficiency efforts will lower taxes owed by \$1,500!

To learn more about the energy efficiency tax credits visit the government website [www.energystar.gov](http://www.energystar.gov) and click on the tax credit box at the bottom of the page.

## Next Issue . . .

### Party cheeseballs

Spring brings many celebrations, including weddings, showers and graduations. What could be easier to serve at your party than an assortment of cheeseballs, crackers and fresh veggies? Check next month's issue for a quartet of cheeseball recipes.

Send recipes, topic ideas, cooking questions & suggestions to:

Watt High Lights

Jackson County REMC

PO Box K

Brownstown IN 47220-0311

fax: 812-358-5719

e-mail: [bbaute@jacksonremc.com](mailto:bbaute@jacksonremc.com)

## The well-stocked camp kitchen

Here are some of the items needed to make a well-stocked campsite kitchen.

- Skillet
- Stockpot
- Dutch oven
- Coffee pot
- Enamel cups and plates
- Inexpensive tableware
- Large wooden spoons
- Spatulas
- Long-handled forks and tongs
- Potholders or insulated gloves
- Manual can opener
- Vegetable peeler
- Paring knife
- Garbage bags
- Dishpan & soap
- Cloth dishtowels and napkins
- Small shovel for moving coals

# Campfire cuisine

by Betty Baute, Member Services Assistant

It won't be long before the campers head for their favorite campgrounds to enjoy their leisure time. There's something special about cooking over a campfire.

When I was growing up, I was a member of a Girl Scout troop made up of dedicated campers. We camped out in tents as often as we could get our leaders to head to the woods, and we cooked every meal over an open fire. It made me a firm believer that food always tastes better with wood smoke and a few ashes in it!



Here are some great open-fire recipes that can be enjoyed at a campsite or in your own backyard.

## Sand-pail supper

**To serve 4 people:** Brown 4 chicken thigh quarters in a skillet, seasoning as desired. Using heavy-duty foil, double-wrap each chicken piece separately. Scrub 4 baking potatoes; grease skins with oil, and double-wrap each potato in foil. Clean and season 8 small ears of sweet corn; double-wrap each in foil.

\* \* \* \* \*

Assemble your sand pail by placing two inches of moist sand in the bottom of a clean galvanized bucket. Place chicken packs on the sand in the bottom of the pail and cover with another 2 inches of moist sand. Place potatoes in bucket and cover with another 2 inches of moist sand. Add corn to the bucket and top off with more moist sand. When ready to cook, place pail on a deep bed of coals, adding more wood or charcoal to keep fire going for 90 minutes. When ready to serve, dump contents of the pail onto a table or the ground and sort out cooked food bundles. Carefully unwrap food and serve.

## Campfire dessert

1 can (15 ounces) crushed pineapple	1 bag (8 ounces) chopped pecans
1 can (21 ounces) cherry pie filling	1 box (18 ounces) yellow cake mix
1 can (21 ounces) strawberry pie filling	1 to 2 sticks butter or margarine
2 cans (21 ounces each) apple pie filling	1 cup miniature marshmallows
1 jar (2.37 ounces) ground cinnamon	

Preheat an oiled 12-inch Dutch oven over campfire. Drain pineapple and spread evenly over bottom of Dutch oven; sprinkle lightly with cinnamon. Layer pie fillings in order listed, sprinkling cinnamon between each layer. Sprinkle pecan pieces evenly over fruit. Cover the fruit with dry cake mix. Cut the butter into thin squares and spread evenly over cake mix. Sprinkle marshmallows evenly over top. Cover and set Dutch oven in a bed of moderate coals (about 350 degrees). Place coals on lid to bake top. Check after 20 minutes and add more coals to top, if necessary. Bake for approximately 1 hour. Yield - 6 to 8 servings

## Hobo stew

1/4 cup vegetable oil	2 envelopes (1 ounce each) dry onion soup mix
1 steak (about 1-1/2 pounds) cut into bite size pieces	2 cloves garlic, chopped
1 medium onion, chopped	1 head broccoli or cauliflower, chopped
1 pound baby carrots	1 teaspoon pepper
1 green pepper, chopped	water to cover ingredients
4 large potatoes, peeled and diced	2 to 3 tablespoons flour

Heat oil in cast iron Dutch oven over fire. Brown steak, onion and garlic in oil. Add the remaining ingredients, EXCEPT flour; and stir well to mix. Cover and bring to a boil. Cook about 15 minutes, then carefully lift lid and check carrots for tenderness. In a cup, mix the flour with 1/4 cup water; stir flour mixture into stew to thicken gravy. Serve hot with biscuits or toast. Yield - about 6 servings

## Cheddar Spam and potatoes

1 can (12 ounces) Spam or other canned luncheon meat, diced	1/2 stick margarine, sliced
4 medium potatoes, diced	1 package (8 ounces) shredded cheddar cheese
1 small onion, diced	

Place Spam, potatoes, onion and margarine in a foil bag or pouch. Place over hot coals. Cook until potatoes are done, approximately 30 to 45 minutes, turning often to prevent burning. When done, open bag or foil and sprinkle with shredded cheese. Serve hot. Yield - 4 servings



### Energy Efficiency

### Tip of the Month

**Choosing an Energy Star-qualified clothes washer over a standard model can lower your utility bills and save energy and water without sacrificing performance.**

Source: U.S. Dept of Energy

## Campfire cuisine essentials & tips

- Keep meats and other perishable foods in one cooler and drinks and frequently used items in another. This will reduce the number of times the perishable cooler will be opened.
- Lessen your need for cooler space by cooking dishes with pasta, rice, polenta, oatmeal and dried beans. Used canned meat whenever possible.
- Recycle clean pill bottles or other small plastic containers by using them to make a spice kit to carry in your camp kitchen.
- Plan a menu before you go so you can be sure to pack everything you need.
- Potatoes should be a staple in your campfire kitchen. They can easily be baked, boiled, fried or mashed or used in soups or stews.
- Prepare dry mixes for foods such as pancakes, skillet scones, biscuits, soups, etc., at home and store in plastic bags or jars. Label the container with the recipe and add the "wet" ingredients at the campsite.
- Take along powdered milk and mix up only what you need at one time.
- Take along chocolate bars, cookies, dried fruit and nuts for snacks and desserts.

*For more information and recipes, visit [www.koa.com](http://www.koa.com)*

# Community Calendar

To have your non-profit group's event listed in our "Community Calendar," please contact us by letter, phone or e-mail (bbaute@jacksonremc.com) at least six weeks before your event date. Include a phone number we can call to verify your information.

## Jackson County

**April 18 - Paper drive** to benefit the Jonathan Brewer Memorial Scholarship Fund; 8:00 a.m. to 2:00 p.m. at the Brownstown Dairy Queen parking lot. Newspapers, magazines, cardboard and mixed paper accepted. For more information contact Steve and Tina Brewer (812-358-5822).

**April 21 - Gardening, Canning and Preserving:** Learn the basics of preserving produce at the Jackson County Public Library in Seymour. Two sessions - 1:00 p.m. or 7:00 p.m. Register by April 14 at 812-522-3412 ext 243.

**April 21 & 23 - Online genealogy basics** at the at the Jackson County Public Library in Seymour. Two-part classes are at 2:00 p.m. Call 812-522-3412 ext 243 for more information or to register.

**April 25 - Annual Kids Fest** from 10:00 a.m. to 2:00 p.m. at the Seymour High School gym. Information for parents from more than 40 booth vendors; many free activities for children; car seat fitting station; bicycle rodeo; tricycle event. The event is sponsored by the Seymour Noon Lions Club. For more information contact Janice at Child Care Network, Inc. (812-523-1825).

**April 25 & 26, May 1 & 2 - Jackson County Community Theater presents "Girls of the Garden Club"** at 7:30 p.m. each evening. Tickets are \$8.00 for adults, \$6.00 for students and seniors and may be purchased at Family Drug in Brownstown and Bevers Family Pharmacy in Seymour. For more information call 1-812-358-5228 or visit [www.jcct.org](http://www.jcct.org).

**May 2 - TRACES Bus Museum** - Held in the Heartland: German POWs in Midwest, 1943-1946 will be at the Jackson County Public Library from 11:30 a.m. to 2:30 p.m. For more information call 812-522-3412 ext. 243.

**May 7 - Mother's Day Muffin and Tea:** Make & Take Dried Flower Frame at the Jackson

County Public Library in Seymour. 6:30 to 8:00 p.m. Register and pay \$10.00 fee for dried flowers and other materials by May 1 at 522-3412 ext. 243.

**May 15 - Walking Tour of Historic Downtown Seymour** at 2:00 p.m. Tour begins at the Jackson County Public Library in Seymour. For more information call 812-522-3412 ext. 243.

**May 18 through July 18 - The Jackson County Public Library's *Be Creative @ Your Library* Summer Reading Program** at the Seymour, Crothersville and Medora libraries and on the Discovery Bus. For more information call the Seymour Library's Kidz Korner at 812-522-3412 option 1.

**May 21 & June 4 - Help for Tough times: Getting a Job** 2:00 to 4:00 p.m. at the Jackson County Public Library in Seymour. Registration preferred one week before each program by calling 812-522-3412 ext. 243.

## Jennings County

**April 21 - Soup Cafe** from 5:30 to 7:30 p.m. Free hot meal for those in need. Operated by Christway Christian Church (just north of Jay-C Food Store on State Road 3 in North Vernon). For more information contact Rev. Dan Denny (812-592-2060).

**April 25 - Four Corners Craft and Garden Show** - 9:00 a.m. to 2:00 p.m. at St. Joseph's Catholic Church Parish Hall, south of US 50 at Hayden. "From Our Garden to Yours" plant sale, variety of perennials, annuals and vegetable plants, hanging baskets, crafts, garden art, home décor, baked goods, lunch of sandwiches and salads available. For more information call 812-346-8685.

**April 25 & 26, 2009 - Sassafras Tea Festival & Civil War Living History** - sponsored by the Jennings County Historical Society. Civil War history, mock battles, Blue & Grey Ball, bake sale at the society's museum in Vernon. For more information call 812-346-8989.

**May 9 - Hayden Bluegrass & Gospel Show** at Hayden Historical Museum Pavilion. Music begins at 5:30 p.m. Admission free - food and drinks available. For more information contact Rodger Ruddick (812-346-7779).

## Scott County

**April 18 - Antiques Appraisals** from 1:00 to 4:00 p.m. by Lyman Goben and Rob Cathcart at the Scott County Heritage Center & Museum. Cost is \$5.00 per item. For more information call the museum at 812-752-1050.

**April 20 - Spring Basket Silent Auction** begins and runs through 4:00 p.m. on May 16 at the Scott County Heritage Center & Museum. For more information call the museum at 812-752-1050.

**May 2 - Annual Steak Fry** at Scott Lodge 120 F&AM at the lodge hall on U.S. Highway 31 in Austin. Serving steak and hamburger steak dinners from 4:00 to 7:00 p.m. For more information contact Barry Parks (812-794-2042).

**May 8, 9 & 10 - Too Many Ghosts** will be presented by the Scott County Museum Theatre Company. Show times are 7:00 p.m. on the 8th & 9th and 3:00 p.m. on the 10th. Admission is \$8.00 for adults and \$6.00 for students. For more information call the museum at 812-752-1050.

**May 16 - 5th Annual Springfest** from 9:00 a.m. to 4:00 p.m. at the Scott County Heritage Center & Museum. Car show, baking contest, food, music and more. Spring Basket Silent Auction ends at 4:00 p.m. Free admission. For more information call the museum at 812-752-1050.

**May 18 - Scott County Historical Society Dinner** featuring "Show and Tell: Family Treasurers. Event begins at 6:00 p.m.; cost is \$6.00 per person. For more information call the museum at 812-752-1050.

*Community Calendar  
continued on next page*

## Community Calendar continued

May 20 – **Brown Bag Lunch** program at 12:00 noon at the Scott County Heritage Center & Museum. Featured will be *Down Memory Lane* presented by Dorothy Rice. Bring your own lunch. Desserts and drinks will be furnished. For more information call the museum at 812-752-1050.

### Washington County

**April 17 & 18 - 9th Annual Spring Home & Garden Show** sponsored by Leader Publishing Company. More than 90 vendors will be set up at the Washington County Fairgrounds. Free admission; door prizes and grand prizes. Hours are 5:00 p.m. to 8:30 p.m. on Friday, April 17 and 9:00 a.m. to 2:30 p.m. on Saturday, April 18. The Salem Lions Club will hold a fish fry on Friday night and Westview Christian Church will provide breakfast and lunch on Saturday. For more information call Leader Publishing at 812-883-3281.

**June 13 - Safari Bike Ride** in Pekin. Several tours ranging 8 to 60 miles. Entry fee is \$20.00 before May 23, \$30.00 after May 23. Kids under 10 are free. More information and registration forms can be found at [safari-bikeride.com](http://safari-bikeride.com). Sponsored by the Pekin Community Betterment Organization.

**Weekends now through November 29 -** The restored **Beck's Mill** will be operating and open for tours. The non-profit group Friends of Beck's Mill, Inc., will greet visitors from 10:00 a.m. to 4:00 p.m. on Fridays and Saturdays and 1:00 to 4:00 p.m. on Sundays. Contact Lowell DePoy (812-472-3749) for more information or to schedule special group tours.

**2009 Jackson County  
REMC Annual Meeting  
Thursday, July 23  
at the Jackson County  
Fairgrounds**

## Dollars & Sense Air conditioning season is on the way!

*Heat pumps and central air  
conditioners need  
to get ready for summer.*

*by Betty Baute, Member Services Assistant*



We've just survived one of the coldest winters in several years. Now air conditioning season is right around the corner.

Here are some tips to help you make sure your heat pump or central air conditioner will operate at its best efficiency during the hot weather to come.

**Schedule a check-up.** Regular maintenance by a qualified professional will ensure that your heat pump or air conditioner will operate at maximum efficiency. It's a good idea to have your unit checked on a yearly basis.

**Keep the filters clean.** Clean or replace air filters monthly. Dirty filters impede air flow and increase operating costs as much as 10 percent, and the equipment could become damaged as a result of the added strain.

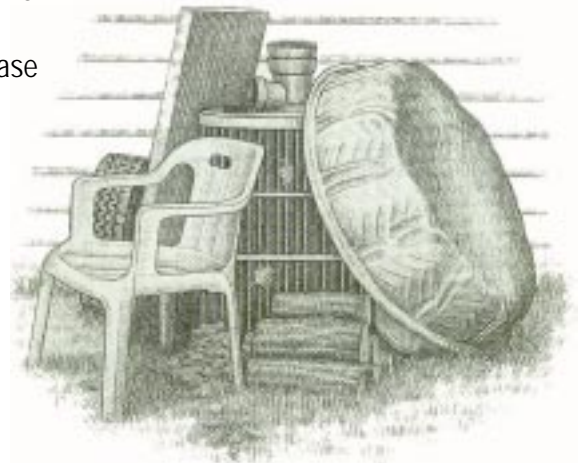
**Don't block registers.** Make sure air supply and return air registers are not blocked by furniture, drapes or other objects.

**Keep the outdoor unit clear.** Make sure grass, weeds, shrubs or

other debris do not hinder air flow. Don't stack items around or on the outdoor unit, and don't enclose it.

**Set the thermostat and leave it alone.** Even better, install a programmable thermostat. This will help you to regulate the temperature in your home more efficiently.

**Bigger doesn't always mean better.** If you are going to add or replace a heat pump or central air conditioner, make sure it is properly sized for the cooling load. Equipment that is sized too large won't properly cool or remove humidity, and it will operate less efficiently.



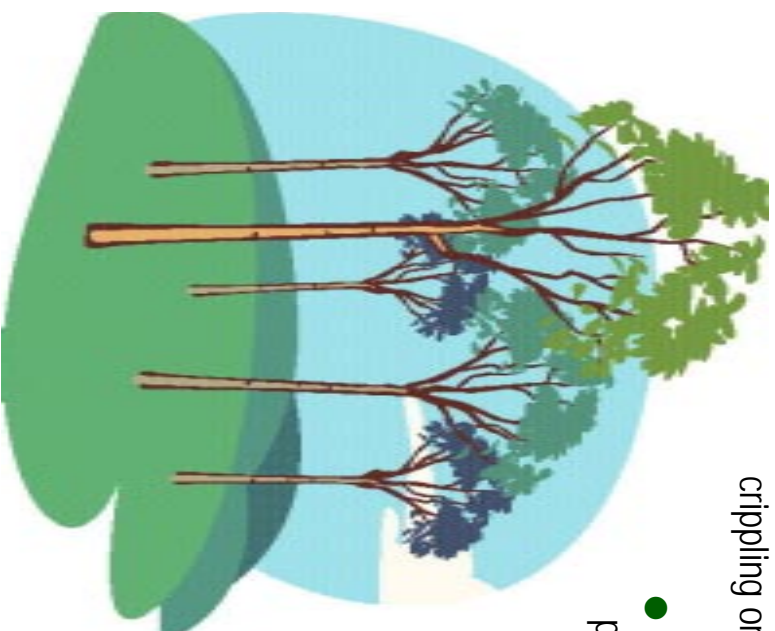
**Keep your heat pump or central air outdoor unit clear so it can "breathe" freely.**

When calling or writing please give the name and account number shown on your label or billcard.

## From little seedlings mighty trees do grow!

Now is a perfect time to plant trees, but be sure you plant them well away from power lines. If you aren't careful with your site selection, your little seedlings could grow into big problems!

- A good rule of thumb is to plant ornamental-size trees at least 30 feet away from overhead power lines and larger size trees at least 50 feet away.
- Trees growing into power lines are a serious safety hazard. Touching a tree that is in contact with a power line could result in a crippling or fatal shock.



- Tree limbs coming into contact with power lines are major causes of power outages and those annoying power "blinks."
- Never try to trim or fell trees that are on or near power lines. Call the REMC for help instead.

**For more advice about tree planting locations and tree trimming or removal, call the REMC at 358-4458 or 1-800-288-4458.**

During regular office hours you will be connected with our switchboard operator. After regular hours you will be connected with our answering service. Please call during regular office hours for all business other than outages or emergencies.

### OFFICE HOURS

7:30 AM to 4:30 PM - Monday through Friday

Local calls - 812-358-4458

Toll free - 800-288-4458

FAX only - 812-358-5719

E-mail - [info@jacksonremc.com](mailto:info@jacksonremc.com)

Web site - [www.jacksonremc.com](http://www.jacksonremc.com)

EZ-to-pay online - visit our website

EZ-to-pay by phone - 1-866-850-1766

**TELEPHONE (812) 358-4458**

**TOLL FREE (800) 288-4458**